



Resettlement and Livelihood Restoration Planning

Resettlement and livelihood restoration planning provide the necessary strategic framework for the social planning of a project. This type of planning identifies strategies and measures to avoid, mitigate and manage potential adverse impacts to persons arising from the development of a project, including any potential need for physical displacement and/or compensation resulting from the loss of land, livelihood and assets.

Earth Systems has extensive international expertise in participatory resettlement and livelihood restoration planning. By tailoring our approach to meet the needs of each project, we ensure that project impacts are considered in the context of the local environment and community resulting in proposed management measures that are both technically feasible and socially appropriate.

The participatory approach encourages community buy-in and ensures that existing community resources, expertise and strengths are incorporated into development planning. The result is a sustainable resettlement and livelihood restoration program, which provides the best possible outcome for Project Affected People.



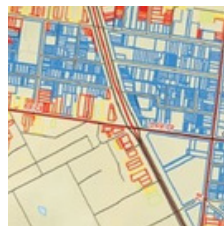
SERVICES PROVIDED

- Baseline socio-economic, census and land / asset surveys.
- Participatory assessment of potential impacts and development of resettlement, livelihood restoration and compensation.
- Application of Free, Prior and Informed Consent (FPIC) and consideration of indigenous rights in the consultation process.
- Preparation of detailed, costed and time bound compensation programs, Resettlement Action Plans / Livelihood Restoration Plans following internationally recognised guidelines including IFC Performance Standard 5 and the Equator Principles.
- Participatory development of benefit sharing agreements and community development programs.
- Identification of institutional arrangements and implementation responsibilities of the project owner/developer, Government authorities, communities and other stakeholders.
- Development and implementation of stakeholder engagement, public consultation and disclosure programs.

PROJECT EXPERIENCE INCLUDES

- Regulatory compliance and resettlement workshop, road infrastructure project, Senegal.
- Land, Asset and Livelihood Baseline Study and Resettlement and Compensation Framework for a gold project, Senegal.

- Resettlement Action Plan requirements for an ESIA Update, power generation project, Senegal.
- Resettlement action plan, social development plan, environmental and social monitoring plans for a mineral sands project, Senegal.
- Resettlement and Livelihood Restoration Action Plan for a zircon project, Senegal.
- Management support on the development of a Resettlement Policy Framework including socio-economic baselines, census, land and asset surveys by client contractors, mining project in Cameroon.
- Livelihood Restoration Framework and Public Consultation and Disclosure Plan for a fold project, Guinea.
- Land / Asset and Livelihood Studies in support of a Livelihood Restoration Plan (LRP) for a small hydropower project, Uganda.
- Land Acquisition and Resettlement Plans for a cross-border transmission line project, Lao PDR and Vietnam;
- Livelihood Restoration Plan for a large hydropower project, Lao PDR;
- Input into the design of Community-Driven Development programs in Indonesia and the Philippines.



earthsystemsglobal.com

AUSTRALIA

enviro@earthsystems.com.au

MELBOURNE
4/290 Salmon Street, Port
Melbourne, VIC 3207
+61 3 9810 7500

PERTH

BRISBANE

EUROPE

enviro@earthsystemseurope.com

BRISTOL
Generator Building,
Counterslip, Bristol BS1 6BX,
United Kingdom
+44 117 373 6153

AFRICA

enviro@earthsystemsafrika.com

DAKAR
3ème étage
M&M Plaza, 5th
Route de
l'aéroport Ngor,
Dakar Senegal
+221 3386 83023

KIGALI
M&M Plaza, 5th
floor 24W3 +JCW,
KG 8 Ave, Kigali,
Rwanda
+250 787 807 499

ASIA

enviro@earthsystemsasia.com

ABIDJAN
II Plateaux Vallon,
Sainte Cécile, Lot
219, Cocody-Abidjan,
Cote d'Ivoire
+225 07 89 92 71 13

VIENTIANE
Suite 801, Kolao
Tower II, 23 Singha
Road, Ban Nongbone,
Vientiane, Lao PDR
+856 (0)21 454 434

HANOI
5th Floor, No. 85 Nguyen
Du Street, Hai Ba Trung
District, Hanoi, Vietnam
+84 (0)28 3535 8200

COLOMBO

CHINA

enviro@earthsystems.com.cn

SHANGHAI
Room 1105, Jing'an
China Mansion 1701
West Beijing Road
Shanghai, China
+86 216 887 2968